

GalliNet Limited

~Windows Default Browser Choice~

PeopleHours requires IE (Internet Explorer)

On or after the 1st March 2010 in accordance with EU ruling Microsoft have been required to present users of Windows a choice of alternative browser.

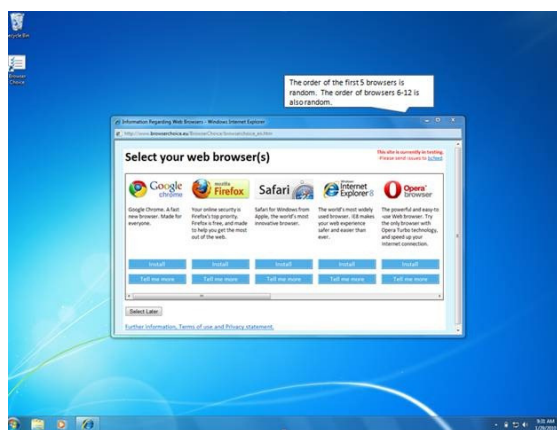
Users of PeopleHours are reminded that Internet Explorer is required, no other browsers will function.

Over the next few weeks, Microsoft will begin offering a “Web browser choice screen” to Internet Explorer users in Europe, as required by the European Commission. Internal testing of the choice screen is underway now.

The browser choice screen software update will be offered as an automatic download through Windows Update for Windows XP, Windows Vista and Windows 7. The software update will be installed automatically, or will prompt you to download or install it, depending on which operating system you are running and your settings for Windows Update. If you do not have automatic updating enabled, you can get the choice screen by going to Windows Update and clicking on “Check for Updates.”

The browser choice screen, shown below, will present you with a list of leading browsers. The list is presented in random order. You can also scroll to the right to see additional browsers, which are also presented in random order.

PeopleHours users are free to choose whichever browser they wish as their default, however removing IE completely will result in your not being able to access PeopleHours.



Links to additional information sources: -

[Microsoft Web Blog](#)

[BBC News Article](#)

**Castle Mill House
Castle Mill Works
Birmingham New Road
Dudley
West Midlands, DY1 4DA**

- **Tel: - 01384 237333**
- **Fax: - 01384 237679**
- **E-Mail: - mail@gallinet.com**
- **Web: - www.gallinet.com**